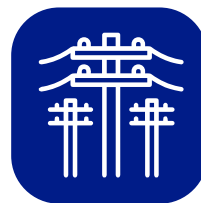




## CAB-5EU-XX

- RoHS TYPE CM 60° C 24 AWG CSA LL81295 CMG 60° C FT4 ETL VERIFIED
- TIA/EIA-568-B.2-1 CAT. 5E UTP 350MHZ



### Construction & Material:

	Item	Unit	Specification
<b>Conductor</b>	Product	-	CAT. 5E UTP 4P
	Size	AWG	24
	Number	P	4
	Material	-	Copperclad Aluminium (CCA)
	Construction	pcs / mm	1 / 0.58 ± 0.005
	Diameter	mm	0.58
<b>Insulation</b>	Material	-	HD-PE
	Min.thickness	mm	0.176
	Avg. thickness	mm	0.198
	Diameter	mm	0.98 ± 0.02
	Color	-	Blue x White/Blue    Orange x White/Orange Green x White/Green    Brown x White/Brown
<b>Twisting</b>	Construction	-	See Cross - Section
<b>Divider</b>	Material	-	PVC
<b>Cabling</b>	Construction	-	See Cross - Section
<b>Ripcord</b>	Ripcord	-	1500 DNYlon Rope
<b>Jacket</b>	Material	-	PLENUM
	Min. thickness	mm	0.38
	Avg. thickness	mm	0.49
	Overall Diameter	mm	6.2 ± 0.2
	Color	-	Gray, Blue
	Frequency	-	350 Mhz
	Lenght	ft	1000